



Gregory Hills

Suite 8 SOMA Centre,
7 Gregory Hills Drive,
Gregory Hills
NSW 2557

P 02 4601 1055
F 02 4601 1058

Wollongong

3/363 Crown St,
Wollongong
NSW 2500

P 02 4226 9333
F 02 4229 4006

Orange

117 Moulder St
Orange
NSW 2570

P 02 4226 9333
(appointments)
P 02 63619377

ILIAC VEIN STENTING

Patient information sheet

Dr David Huber

FRACS (Vasc), FACP, DDU (Vasc)

A/Prof Wollongong
Graduate School of Medicine

INDICATION

This procedure is done for problems related to compression (squashing) of the left (sometimes the right as well) common iliac vein. This can cause a number of issues including pelvic congestion syndrome, recurrent varicose veins and chronic venous insufficiency including venous ulcers. The diagnosis is made by duplex ultrasound scan with confirmation by venography, CT or MRI.

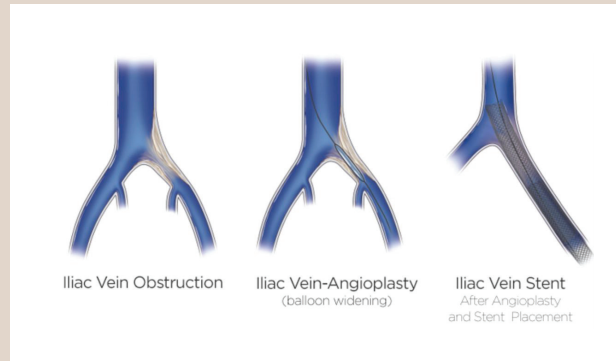
THE PROCEDURE

This is done in an angiogram suite using Xray and is done either under general anaesthetic or sedation with local anaesthetic. It is a day procedure. The veins in the right and left groin are cannulated with a needle and sheaths inserted (small tubes through which the balloon and stents can be delivered). The compression zone is ballooned (stretched up or dilated) using a large balloon and then a stent is placed in the vein to hold it open. This is usually done on the left side alone. Sometimes the right side is done as well. The procedure takes approximately 45mins.



AFTER THE PROCEDURE

- You will spend an hour in recovery.
- The sheaths are removed and a nurse will put pressure on the groin to ensure there is no bleeding
- You will be discharged after 2 hours
- Pain relief medication for the back pain
- Normal activities as soon as you feel up to it
- Blood thinners for 3 months
- Antiplatelet medication (low dose aspirin) indefinitely
- Followup duplex ultrasound test before followup
- Review by your doctor in approximately 2-4 weeks



EXPECT

- Bruising in the groin
- Some tenderness in the groin
- Back pain for up to 5 days which can be quite severe

COMPLICATIONS

- Blockage of the stent by clot (1-2%)
- Narrowing of the stent
- Stent migration (the stent dislodging and travelling to the heart). It is very rare but is a serious complication if it does occur.

IF YOU ARE CONCERNED

You can contact your AVC Doctor:

Through our website

www.theartofveincare.com.au

on 4226 9333 or mobile 0418 269 333

There is also 24 hours cover at the Emergency Departments at Wollongong Hospital or at Liverpool Hospital.

